

Display Express PC Installation from Memory Stick

This guide is included with your Display Express Installation memory stick. Please read through this document before installing your software. There are several tasks you need to perform on your PC before you install the software.

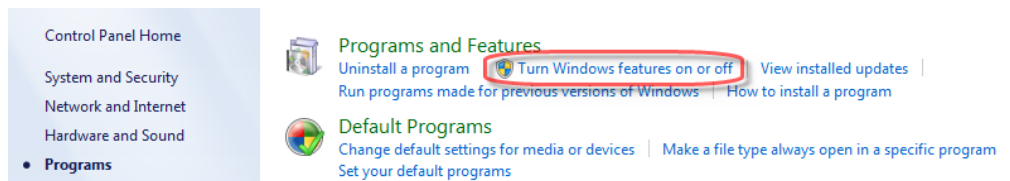
Once you've configured the PC, you'll follow a few simple steps to install the software.

Configuring Windows 7 Pro

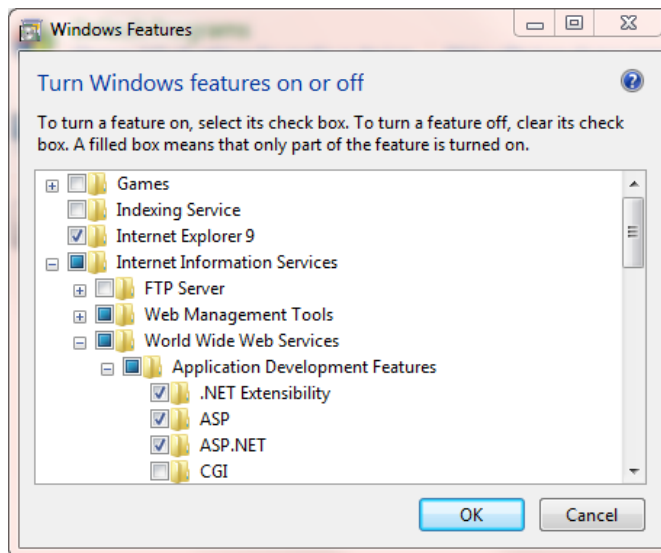
Installing Display Express software into a Windows 7 Pro computer is a fairly simple process. This is far easier than Windows XP Pro, as all the tools you need are already present in Windows 7.

Internet Information Services

This group of services makes it possible to server Web pages from the computer.

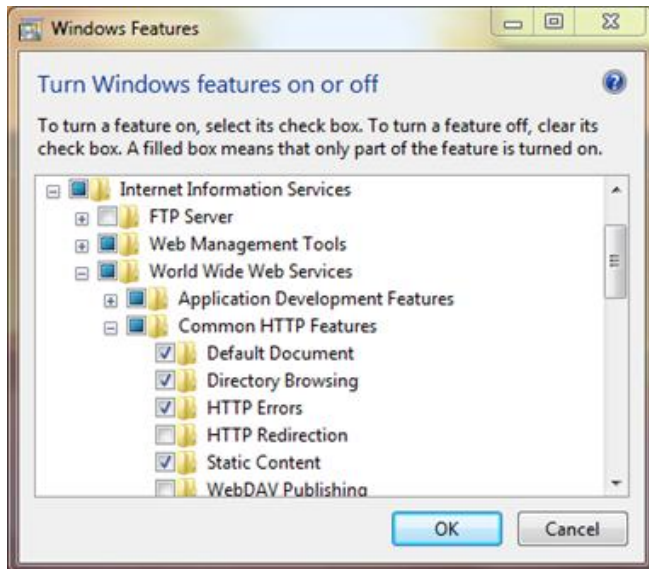


Go to Control Panel > Programs and Features > Turn Windows Features On or Off. A Windows Features Menu will appear, it will often take a bit of time to load.



Click **Internet Information Services** (turns to blue square)

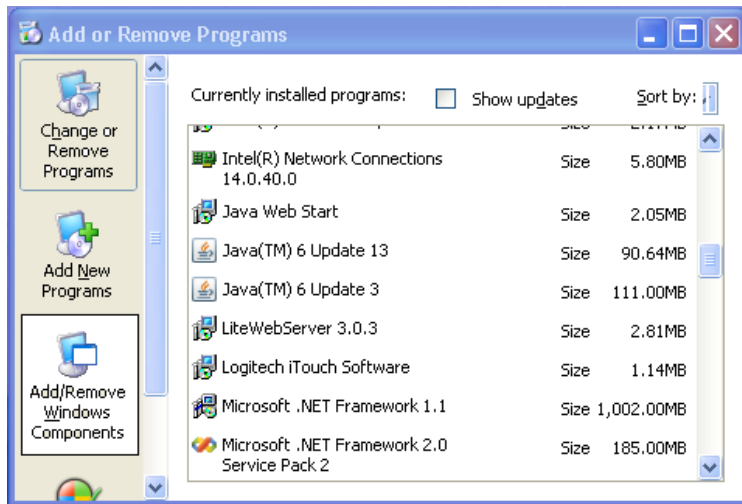
- Expand **Internet Information Services**
- Click on **Worldwide Web Services**
- Click on **Application Development Features**
- Check **ASP.NET**
- Click OK to install the features



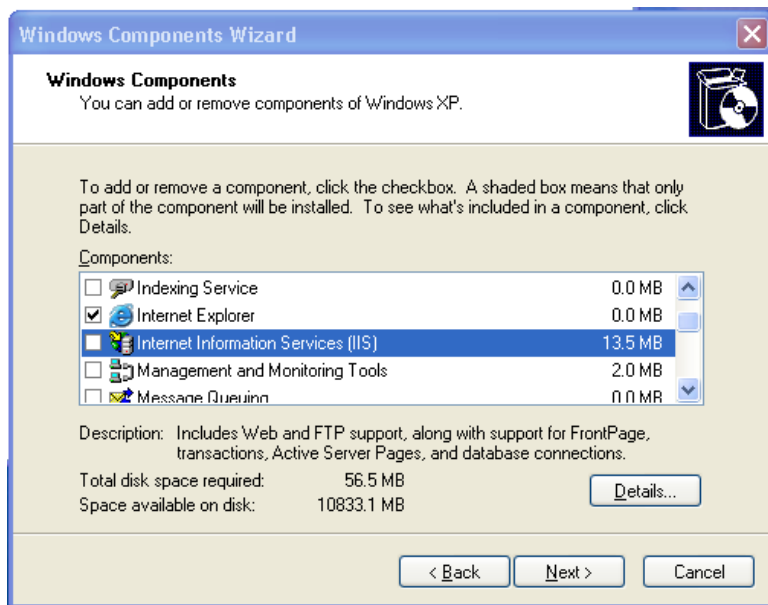
For a very few sites, the ability to see images in a Web page has been turned off. If that's the case, you won't see the header at the top of the Display Express pages. To fix this:

- Go to IIS as before and expand **Common HTTP Features** as shown on the left
- Check **Static Content** to enable images

Configuring Windows XP Pro

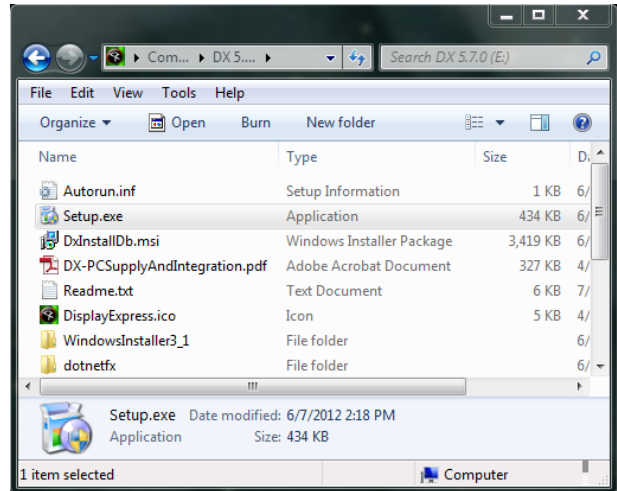
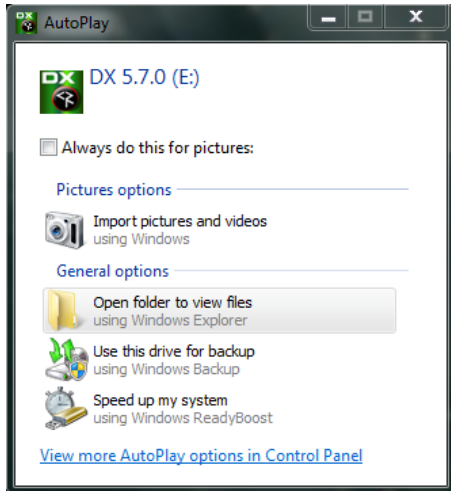


Internet Information Services (IIS) should be installed on your computer before Display Express is installed. To find out if IIS is installed on Windows XP, click on Control Panel > Add or Remove Programs, then click on the Add/Remove Windows Components icon on the left. In the next window, scroll down and find Internet Information Services. If it does not have a check mark next to it, then it is not installed.



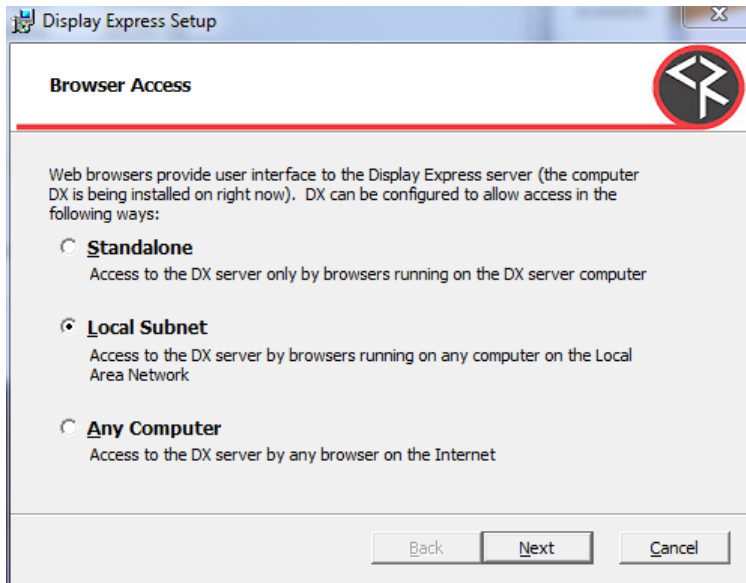
To install IIS, click to put a check mark next to IIS, then click on Next, etc. You will need the CD used to install your operating system if the files are not installed on your hard drive, or the installation files may be stored in the server. On Windows Server 2003, look for Application Server instead of Internet Information Services in the Add/Remove Windows Components dialog. The PC will likely need to restart.

Install Display Express



When you insert the memory stick, you'll see the dialog box above. Select **Open Folder to view files**. Once you've opened the folder, double-click **Setup** to start the process.

Run the DX installer, there will be the usual Windows pop-up questions, then an agree/disagree DX Installer popup, then:



Use the **Local Subnet** selection for typical installs. This means others on your network can access the DX Web pages, but not from outside your network.

When the app is complete, you'll see 2 DX Icons, one launches DX, the other brings up the Manual. Click the DX icon and see if the DX login screen appears. Proceed if it does, if not, restart the PC.

COM Port

If you are using in a PC with an onboard COM port, or a USB to RS-232 adapter, this is a good time to define the port. In Win7, the number of the port is at Control Panel/Devices and Printers. Under Unspecified, you'll see a device usually named USB UART. Click the icon, then the Hardware tab. You'll see the COM port number there.

When you have that info, login to DX and go to Setup/Options. Enter the COM port # there.

If you are restoring an existing DX PC from Contemporary Research, contact CR Support for the installer for the USB to RS-232 adapter.

Power Options

Right-click the background screen, choose Personalize, then Screen Saver. Select **Power Options** and make sure the computer does not go into Sleep mode or stop drive operation.

Upgrades

Software updates to Display Express are free. Go to the www.crwww.com website, select **Downloads**, look for **Display Express**, and then download the installer. The installer will also place the updated manual on your PC desktop as well.

Display Express Training Videos

This series of videos provide step-by-step demonstration of Display Express software operation, setup, and control.

- [Overview](#)
- [System Setup – Options, TVs, Groups and Channels](#)
- [Creating Presets](#)
- [Scheduling and Alerts](#)
- [Panels and Users](#)

Starting With an Empty System

DX installs a default set of data when it installs. You could delete those items manually, but there's an easier way.

- Log into the app as Admin.
- Go to the **Presets/System** page
- Click the **Restore System** radio button, then select **~Empty System~** from the pull-down list
- Click the **Do Now** button
- Now you have a clean slate to start from

Fixing Missing Header on DX Web pages

In most versions of Windows, enabling Internet Information Systems activates most of the settings you need to deliver Web pages properly. We have seen rare cases where one setting is incorrect – the symptom is you can't see the JPEG header at the top of the Web pages. To fix this,

- Go to Control Panel, select Programs
- That brings up Programs and Features, select Turn Windows Features On or Off
- Got to Internet Information Service and make sure Static Content is on as shown below

