

## IP-232 IP to RS-232 Interface

### Applications

Boardrooms  
Training Centers  
Broadcast Testing  
Command and Control Centers



### Sales Support

*Need help integrating IP control for your application? Our Sales Support staff will be happy to work with you, providing expert integration assistance and a complete systems proposal.*

### Tech Support

*Need tech help? Give us a call. Our tech support staff are experts in the integration industry, so we can research solutions in the proposal stage, advise on programming requirements, and resolve installation issues.*

*Our job is to make our solutions work seamlessly with your system, performing as promised.*

### Related Products

AV Tuners  
ATSC Tuner  
232-Amp Mixer/Amplifier

The IP-232 extends Ethernet control to CR's 232-series TV tuners, video projectors, displays, and other RS-232 controlled equipment. The IP-232 is PoE compliant, accepting power through the LAN in either A or B modes. The unit is fully programmable, and includes switch settings to aid in installation.

A single IP-232 can control up to nine tuners over Ethernet, with a full 2-way data connection to custom control systems or PC software. CR's Tuner Helper 3, a free Windows application, can connect to the IP-232 for point-and-click Ethernet tuner control and setup.

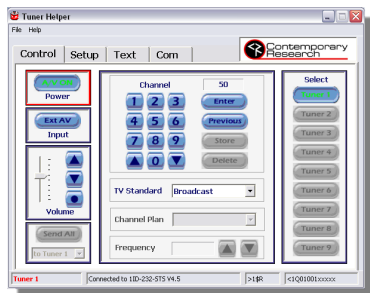
### Features

- Extends RS-232 control over Ethernet
- Controls up to nine CR 232-series tuners or other RS-232 controlled devices
- Powers from Ethernet (PoE) connection in A and B modes
- Integrates any RS-232 controlled device, including video projectors, displays,
- Works with CR's free Tuner Helper 3 software for graphic PC-direct Ethernet tuner control for CR tuners
- Operates with Telnet commands from AMX, Crestron, Simtrol, other control systems, and PC software
- Sets up from IP, RS-232 port, and onboard DIP switches
- Mounts in RK3 AV System Tool Rackmount, or alongside AV tuner in RK-1 or RK-HD1 rack mounts, or surface-mount to CR tuner with SMA Surface Mount brackets
- Includes power supply
- Meets RoHS safety and California energy standards

## IP-232 IP to RS-232 Interface



**PS-PoE15 Power Injector**



**Tuner Helper 3**

### Specifications

Feature	
<b>Physical</b>	5.5" [140mm] wide x 1.1" [28mm] height x 3.5" [86mm] deep 8 oz [226g] Rack-mount with other AV Tools in RK3 rack kit Mount alongside tuner in RK-1 or RK-HD1 rack kit RoHS compliant and energy-efficiency meets new California standards
<b>Connections</b>	
<b>RS-232</b>	Connector: DB-9 male, 300 to 19,200 baud (9600 default) LEDs: Tx (Red), Rx (Yellow)
<b>Ethernet</b>	10/100baseT RJ-45 jack, RX/TX LEDs indicate Ethernet data send and receive Power over Ethernet (PoE) compatible, in A and B modes
<b>Setup</b>	DIP switch on bottom of case for in-field setup Programmable via RS-232 port or remote setup vis Ethernet
<b>Power</b>	2.1mm coaxial jack (inside center conductor positive) 150 mA maximum, 11.5 to 15 VDC, 12 VDC typical
<b>Includes</b>	Switching power supply, 500 mA 12 VDC
<b>Options</b>	PS-Poe15 PoE Power Injector, 15 Watts Tuner Helper 3 Software RK-HD1 Single Rack Kit (for 232-ATSC tuner) RK-1 Dual Rack Kit (for 232-STC, STA, MTA tuners) SMA Surface Mount for AV Tools (mounts IP-232 to CR tuner or flat surface) CC-232 RS-232 Cable

### Warranty

All CR products feature a full two-year warranty.

