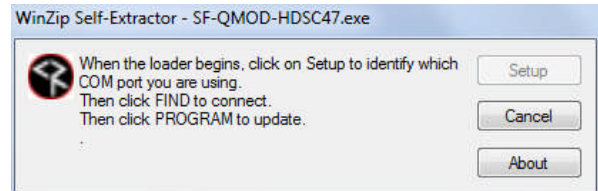
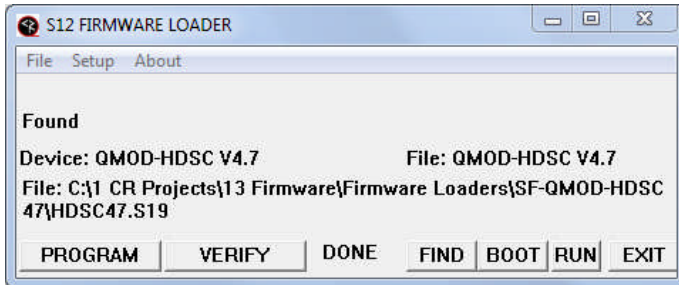


S12 Firmware Loader

RS-232 Tool for CR Control Firmware



Many Contemporary Research products, including AV tuners, QMODs, the IR-232 Interface, all iC-Net controllers and others feature our advanced S12 processor that allows in-the-field firmware updates using a Windows PC, a COM or USB-RS-232 adapter, and an RS-232 null modem cable (DB7 Female to Female, TX and RX swapped at one end).

RS-232 Driven Tuners, QMOD HDTV Modulators, and other devices.

The firmware download process works simply and easily:

- Download the desired firmware self-extracting EXE file at www.crwwww.com/downloads.
- Connect the S12-series CR product to an RS-232 port and note which RS-232 port you are using.
- Make sure programs such as HotSync aren't already using the RS-232 port.
- Also check to see if the tuner is set to Unit 1 (hold Mute and Volume (or Select) Up for front-panel mode, then press Volume Up to select view mode 2 Unit # settings, use Channel Down button to set unit to 1, if needed).
- Run the EXE program, then click **SETUP** to select **COM** port.
- When the program connects with the tuner, you'll see the name of the product after **Device:** and the firmware file you are loading after **File Name:**.
- Normally, the desired firmware file is already loaded – you can use **File/Open** if you have several firmware files stored in your PC.
- Click the **PROGRAM** button to start the loading process. You may see several messages and the app installs the firmware. You'll see a **RUN** message when the load process ends and reboots the unit.
- The VERIFY, BOOT, RUN are manual operations that the loader and **PROGRAM** performs automatically - you'll rarely use them unless asked by CR Tech Support.

IC-NET Controllers – Update Firmware Over RF Coax

There is a separate manual for updating controllers over RF through the ICC/ICE-HE Head End Controller. Go to the Display Control section of the Downloads page at the CRWWW.com website to download the correct manuals.