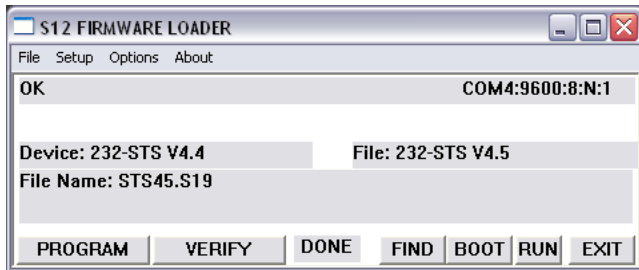


Updating ICC2-ATSC 4/4S Firmware

S12 Firmware Loader



This S12 firmware loader (S12L152.EXE) is included with the ICC2-ATSC 4/4S Firmware Pack. The ZIP folder includes the S12 and HD Load firmware installers.

- Right-click the ZIP file and extract the files.
- Use a null modem cable to connect the controller to a COM port or a USB-RS-232 adapter. Note that many gender benders attached to a straight-through cable rarely work.
- Provide power to the ICC2 tuner.
- Note the COM port number, in Win7 and above, the USB port is found in the Device and Printers menu, noted with the USB-to-Serial Com Port or right-click and select Properties and Hardware tab to see the COM port number.
- Run the S12 EXE program, then click **SETUP** to select **COM** port.
- When the program connects with the tuner, you'll see the name of the product after **Device:** and the firmware file you are loading after **File Name:**
- The last-used file is normally selected – you can use **File/Open** to access the firmware file you need.
- Click **FIND** to find the controller
- Click the **PROGRAM** button to start the loading process.
- If you're updating several controllers, you can skip the Find button and start PROGRAM once the new controller is connected
- You may see several messages while the program tests the COM port baud rate - You'll see a RUN message when the load process begins. When you see the new file name appear at Device: - you're done.

The VERIFY, FIND, BOOT, RUN are manual operations that the loader and PROGRAM performs automatically - you'll rarely use them unless asked by CR Tech Support.

USB HD Firmware Installation

Perform this step after the S37 firmware (V6.8 or higher) has been installed

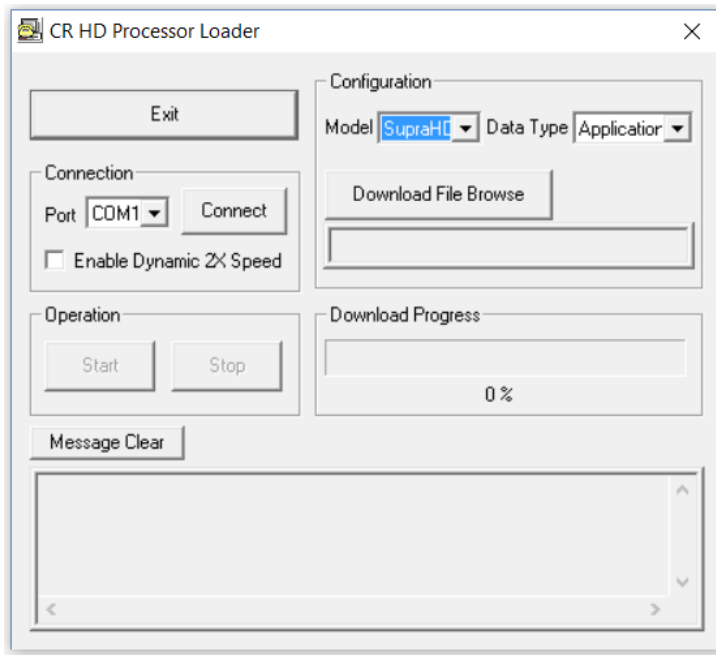
To Enter Front Panel Programming Mode:

1. Press **and hold** the **Power** button, then press the **Volume Up (Right Arrow)** button
2. Release all buttons, the ICC2-ATSC 4/4S will now be in the front-panel programming mode. The Air LED will flash, indicating programming mode.
3. The first two digits show the mode, the second show the option.
4. Changes are saved in non-volatile memory as they are entered.
5. The Left-Right buttons scroll through programming modes, forward and reverse.
6. The Up-Down buttons scroll through options for each mode.

To Exit the Front Panel Mode, push and release the **Power** button.

- Copy the file **HD4V6xx.rom** to the root of a USB memory stick. Make sure that it is the only *.rom file on the stick.
- The memory stick should be formatted as FAT, FAT16, or FAT32, not NTFS
- Place USB memory stick in the Service USB port of the ICC2-ATSC 4/4S
- Initiate Front Panel Programming mode
- Click the Right button to mode 6 to view the current S12 firmware
- Click Down button to show the current HD firmware
- Click the white Setup button to install the new firmware from the memory stick
- The front-panel LCD will show USB | | while installing. If the display changes for only a short time, check to see if the XXXX.rom file is on the memory stick.

HD Load Firmware Installer (via RS-232)



The **HD Loader** (HD-files) updates the firmware for the ICC2-ATSC 4 series tuners HD processor that manages the tuning and output of digital and analog channels. Use this format of installation only if the Service USB port is not operating or if a memory stick is not available. This process will be much slower than a USB install.

RS-232 Setup

- **Confirm.** Use the tuner's IR or blue **Menu** and front-panel buttons to bring up the on-screen **Menu**. Select **Captions**, then **Version Information** to view the current firmware version
- **Connect** a DB9 Female to Female null model cable (TX and RX swapped at one end) between a PC and an ICC2-ATSC4 RS-232 port.
- **Unplug** the DC power to the ATSC-series tuner

HD Processor Loader Operation

- **Download** the Firmware Pack from the ICC2-ATSC4 Product/Download page and extract the compressed folder.
- **Run HD Load app:** Find the folder and start the HDLOAD.EXE app.
- **Com Port:** Select the COM port you're using from the pull-down list at Connection. Don't select Enable Dynamic 2X Speed
- Select the COM port you're using from the pull-down list at **Connection**. Don't select **Enable Dynamic 2X Speed** as an option.
- Change **Model** to **SupraHD**
- **File:** Browse to the Firmware Pack folder and select the HD_Vxxxx.rom file.
- **Connect:** Click the **Connect** button below **Configuration**.
- **Start:** Click the Start button to begin the download process
- **Set ATSC for Download:** Hold down both Volume (Left and Right arrow) buttons and connect DC power. The ICC2-ATSC+/ATSC 4 display will show a dash (-) to show it is in the HD Load mode.
- **Observe Status Text:** The **Download Progress** bar and **Message** box will keep you up to date on progress. If the download does not start, try updating the COM port driver, use a different USB adapter, or retry the process a few times.