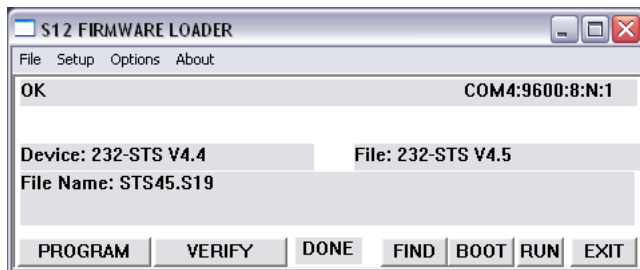


Updating ICC2-ATSC+/ATSC 4 Firmware

S12 Firmware Loader



This S12 firmware loader (S12L152.EXE) is included with the ICC2-ATSC+/ATSC 4 Firmware Pack. The ZIP folder includes the S12 and HD Load firmware installers. **Note that with S37 firmware, you will need to use front-panel menu to set the control type for your projector or monitor.**

- Right-click the ZIP file and extract the files.
- Use a null modem cable to connect the controller to a COM port or a USB-RS-232 adapter. Note that many gender benders attached to a straight-through cable rarely work.
- Provide power to the ICC2 tuner.
- Note the COM port number, in Win7 and above, the USB port is found in the Device and Printers menu, noted with the USB-to-Serial Comm Port or right-click and select Properties and Hardware tab to see the COM port number.
- Run the S12 EXE program, then click **SETUP** to select **COM** port.
- When the program connects with the tuner, you'll see the name of the product after **Device:** and the firmware file you are loading after **File Name:**
- The last-used file is normally selected – you can use **File/Open** to access the firmware file you need.
- Click **FIND** to find the controller
- Click the **PROGRAM** button to start the loading process.
- If you're updating several controllers, you can skip the Find button and start PROGRAM once the new controller is connected
- You may see several messages while the program tests the COM port baud rate - You'll see a RUN message when the load process begins. When you see the new file name appear at Device: - you're done.

The VERIFY, FIND, BOOT, RUN are manual operations that the loader and PROGRAM performs automatically - you'll rarely use them unless asked by CR Tech Support.

Front Panel Setup

To Enter Front Panel Programming Mode:

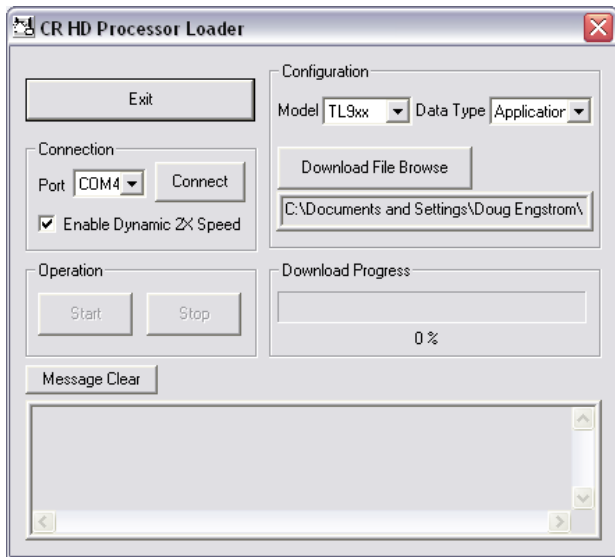
1. Press **and hold** the **Power** button, then press the **Volume Up (Right Arrow)** button
2. Release all buttons, the ICC2-ATSC 4 will now be in the front-panel programming mode. The Air LED will flash, indicating programming mode.
3. The first two digits show the mode, the second show the option.
4. Changes are saved in non-volatile memory as they are entered.
5. The Volume up/down buttons scroll through programming modes, forward and reverse.
6. The Channel up/down buttons scroll through possible options for each mode.

To Exit the Front Panel Mode, push and release the **Power** button.

Control Type	50.n	Current Control type. Refer to the list below. Use Up/Down to change.
---------------------	-------------	---

Type	Make	Display	Baud	Notes
0	CR Test		9600	
1	Sharp	Projector	9600	
3	Sanyo	Projector	19.2K	PLC-WK2500
4	NEC	Monitor	9600	Legacy models with early input commands; not plasma
5	Olevia	Monitor	19.2K	323V
6	Panasonic	Monitor	9600	
9	Mitsubishi	Projector	9600	XD560U
10	Samsung EX	Monitor	9600	Ex-Link
11	Samsung	Monitor	9600	400CXn, 460CXn, ME40A, ME46A, ME55A, MD55B
14	NEC	TV	9600	E-series TVs (redundant, this series has onboard tuners)
22	Hitachi	Projector	19.2K	Hitachi CP-S317, CP-S318, CP-X327, CP-X328 , Christie projector LW650, LW750, LS+700, DWDL95, DHD951, LWU501i, LWU502
24	Epson	Projector	9600	VP 595wi, 1925W Projector
27	Samsung	Monitor	9600	LCD 323T and 403T
28	Samsung	Plasma	9600	
29	LG	Monitor	9600	M32/4201, 42PMIM
32	NEC	Plasma	9600	Odd parity
33	Sharp	Monitor	9600	LC46LE820UN
44	Projection Design	Projector	9600	
45	Extron	Wall Panel	9600	Emulates buttons on Pole Vault wall panel
46	Sharp	Monitor	9600	PN-L702B, PN-V601
47	Sharp	Monitor	9600	LC70LE745U, same as 33, but slightly different input selects - Use for all new Sharp monitors
48	NEC	Monitor	9600	M-,P-, V-, X- series monitors
49	Christie	Projector	19.2K	DHD800
50	NEC	Projector	9600	NP-M402H File I2AT57NEC50.S19 (NEC default is 38.4K, user needs to change baud on projector)
51	Barco	Projector	115.2K	Barco RLS-W12
54	LG	Monitor	9600	
55	Christie 2	Projector	115.1K	DHD850 – different codes than DHD800

HD Load Firmware Installer



The **HD Loader** (HD-files) updates the firmware for the ICC2-ATSC+/ATSC 4 series tuners HD processor that manages the tuning and output of digital and analog channels.

RS-232 Setup

- **Connect** a DB9 Female to Female null model cable (TX and RX swapped at one end) between a PC and an ICC2-ATSC+/ATSC4 RS-232 port.
- **Unplug** the DC power to the ATSC-series tuner

HD Processor Loader Operation

- **Download** the Firmware Pack from the ICC2-ATSC+/ATSC4 Product/Download page and extract the compressed folder.
- **Run HD Load app:** Find the folder and start the HDLOAD.EXE app.
- **Com Port:** Select the COM port you're using from the pull-down list at Connection. Don't select Enable Dynamic 2X Speed.
- **Configuration:** Keep the default settings, Model=TL9xx, Data Type=Application
- **File:** Browse to the Firmware Pack folder and select the HD_Vxxxx.raw file.
- **Connect:** Click the **Connect** button below **Configuration**.
- **Start:** Click the Start button to begin the download process
- **Set ATSC for Download:** Hold down both Volume (Left and Right arrow) buttons and connect DC power. The ICC2-ATSC+/ATSC 4 display will show a dash (-) to show it is in the HD Load mode.
- **Observe Status Text:** The **Download Progress** bar and **Message** box will keep you up to date on progress. If the download does not start, try updating the COM port driver, use a different USB adapter, or retry the process a few times.
- **End.** The Message text will tell you when the process is complete. Close HD Loader, then unplug/replug the 12 VDC Power. You'll need to re-scan channels.
- **Confirm.** Use the tuner's IR or blue **Menu** and front-panel buttons to bring up the on-screen **Menu**. Select **Captions**, then **Version Information** to view the current firmware version.